



elp
a brand of aebi schmidt

Harness Series III

Vehicle attachment



The Harness Series III is an economical and durable solution for urban work. Featuring a completely detachable frontal harness with a hydraulic attachment for quick plough removal, it ensures efficient operations. The single lift point enhances plough control, while the integrated side wing attachment allows for easy installation and removal of all snow removal equipment simultaneously. Ideal for contractors and municipalities.

Highlights

- **Fast setup:** Attaches and detaches in minutes, maximizing efficiency.
- **Tool-free assembly:** No bolts; everything is held in place using pins, simplifying the process.
- **Solo installation:** The operator can install it without help, ensuring ease of use.
- **Streamlined design:** Fewer components, retaining flexibility and robustness for reliable performance.
- **Flexibility:** Can be fitted with all types of reversible and one-way ploughs.

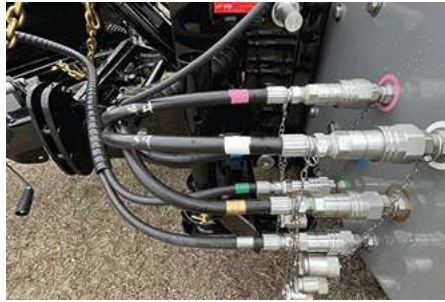
Your benefits

- **Unobstructed truck operation:** No component remains on the truck except for the front base plate integrated into the bumper, maintaining the truck's normal function.
- **Reduced complexity and maintenance needs:** The same cylinder is used to raise the snowplough and attach the harness, simplifying the mechanism.
- **Operational readiness:** The harness sits on legs when removed, making it ready to be put back on at any time, ensuring convenient storage and quick deployment.
- **Easy engine access:** Allows for opening the truck engine compartment hood without removing the harness or side wing, facilitating maintenance and inspections.

Performance features

Robust design

The greasable articulated frame is equipped with a 4 in. double action cylinder. dia. with a 2in shank. dia. nitrided intended for lifting the snow plough and coupling. The mounting plates are profiled and integrated into the female part to support the two 4 in. tubular crosspieces. x 4 in. x 1/2 in. which connect the column to the frontal harness. The upper part of the articulated frame is equipped with a greasable pivot and three (3) integrated grapples allowing the easy attachment and adjustment of the snow plough lifting chains. The front column for operating the front slide of the side wing system is made of a 6-5/8 in. joist. x 3-7/8 in. in the shape of a C profile in which the 1/2 in. slide plate is inserted. The column is coupled in such a way as to allow the hood to be opened at any time, without requiring hydraulic force. The assembly of the front column must provide for the free floating of the side wing over a stroke of at least 10 in. in height.



Related products

Series 632

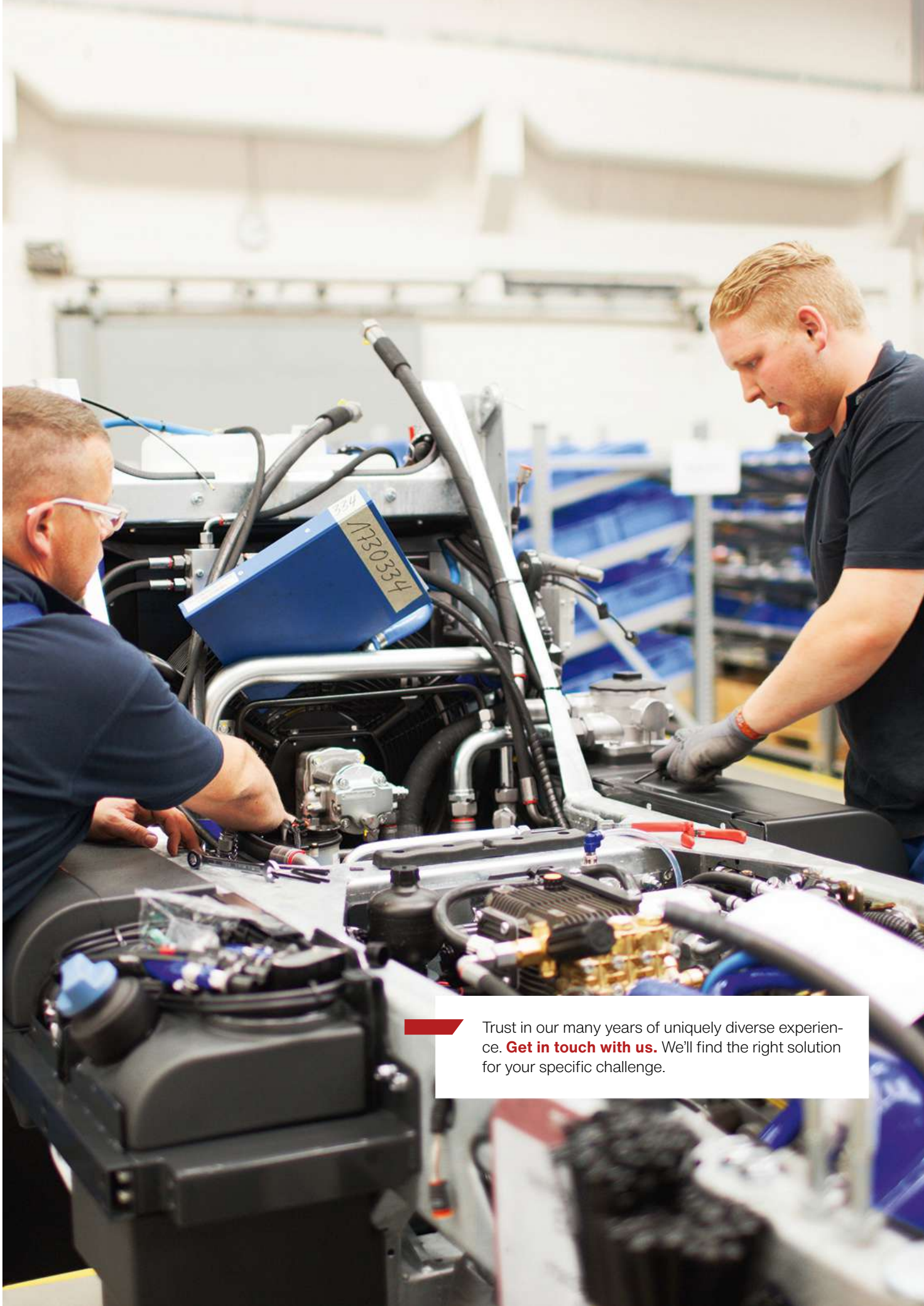
Snow plough



Series 672

Snow plough





Trust in our many years of uniquely diverse experience. **Get in touch with us.** We'll find the right solution for your specific challenge.

Technical data

Weights

Weight (incl. base tyres; without attachment)

578 kg



© Aebi Schmidt Group
www.aebi-schmidt.com

Aebi Schmidt Holding AG
CH-8050 Zurich, Switzerland

All rights reserved. Technical data is
subject to change.
Illustrations are not binding. Errors and
amendments excepted.

Document created on 20 SEP 2024

