

# Used machines offer

## Tarron MS80.2 W - Airport Snow Plough

Offer number: UM0011488

 **aebi schmidt**  
group



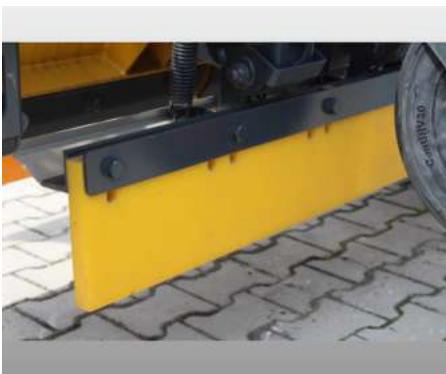
Brand: Schmitz  
Mat.-Nr.: 1093157-5  
Year of manufacture: 2020  
Serialnumber: 74-1-001  
Running hours: 10 h  
Condition: Class 4  
Location: Poland  
25-650 Kielce

Price: **On request**

The offered airport snow plough used as a demo machine.  
Multi blade snow plough with individual blade suspension.

### Gallery





Technical data  
Airport ploughs Tarron MS 72.1 & MS 80.1

Dimensions (mm) and weights (kg)	MS72.1	MS72.1 N	MS72.1 K	MS72.1 N K	MS80.1	MS80.1 K
H1 Plough height, middle sections	1,420	1,200	1,420	1,200	1,490	1,490
H2 Plough height, left and right side (incl. snow deflector plate)	1,550	1,330	1,550	1,330	1,590	1,590
L1	1,360	1,340	1,360	1,340	1,360	1,360
L5 Length on cutting edge	7,200	7,200	7,200	7,200	8,000	8,000
L6 at 0° working width approx.	8,500	8,100	8,100	8,100	8,700	8,700
L8 at 0° passage width approx.	6,340	6,310	6,340	6,310	7,020	7,020
L9 in travel direction, fitted in passage width approx.	—	—	4,560	4,560	—	4,800
H7 at 0° ft	2,420	2,040	2,420	2,040	2,960	2,960
X2 Distance of center of gravity to coupling level according to DIN 55352	1,190	1,120	1,190	1,150	950	920
Weight with PUR cutting edges incl. LED	2,150	2,030	2,400	2,280	2,550	2,650
Weight with all options, approx.	2,570	2,450	2,830	2,700	2,950	3,150
Number of blade segments	9	9	9	9	9	9

## Equipment

### Basic Data

Model	Tarron MS 82.2 W
Type	Airport snow plough
Frame	Parallel lifting device
Blade	Width 8'000 mm
Cutting	Edge Cutting edge material made out of PUR, incl. slush cutting edge
Support	Support via wheels
Connection	Adapter for din front mounting plate size 5
Options	Elasto snow cover, LED warning lamps on LH and RH side
Weight	2'740 kg

## Contact

Grzegorz Bajerczak

Phone: +48 413652160

E-Mail: grzegorz.bajerczak@aebi-schmidt.com



© Aebi Schmidt Group | www.aebi-schmidt.com

Aebi Schmidt Holding AG | CH-8050 Zurich, Switzerland

All rights reserved. Technical data is subject to change.  
Illustrations are not binding. Errors and amendments excepted.

Document created on  
4 SEP 2024

**aebi schmidt**  
group